



24 Cromwell Road, London, E17 9JN

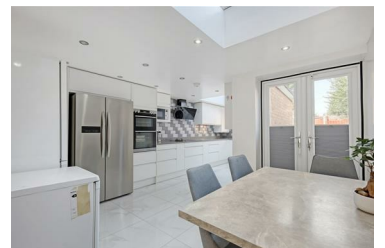
Offers in excess of £880,000



Nestled on a quiet, tree-lined street in the heart of Walthamstow, this beautiful four-bedroom freehold home offers the perfect balance of contemporary comfort and timeless character. Thoughtfully extended and fully modernised.

Step inside to a bright and spacious living area that flows effortlessly into a sleek open-plan kitchen and dining space—perfect for entertaining or relaxed family evenings. French doors open out to a private garden, flooding the rear of the home with natural light.

Upstairs, the first floor features two well-proportioned bedrooms and a stylish family bathroom. The top floor has been transformed into a private principal suite with an en-suite shower room and an adjoining study—ideal for home working, dressing space, or a nursery, the suite can also be accommodated as a single bedroom, as it has the capacity to accommodate a single bed, wardrobe and work desk.



- 0.7 Miles To Walthamstow Central ■ Walthamstow Village Location Station
- Open Plan Kitchen / Living Room ■ West Facing Rear Garden
- Modern Kitchen With Intergrated Appliances ■ 126 Sq M - 1356.2 Sq Ft